

## AC1100 10/100/1000M Fibre Optical Media Converter Series

AC1100 series 10/100/1000M Ethernet media converter adopts switching technology to fulfill media conversion. It complies with IEEE802.3z and IEEE802.3ab standards, and supports two types of media network connections:

10/100/1000Base-T and 1000Base-SX/LX. It inter-converts electrical signals of 10/100/1000Base-T twisted pairs with optical signals of 1000Base-SX, extending the transmission distance of a network from 100m via copper cables to 220m (fibre size: 62.5/125µm)/550m (fibre size:50/125µm) via fibre optical cables. It supports transmission in multi-mode dual fibre; single-mode dual fibre, single-mode single fibre.

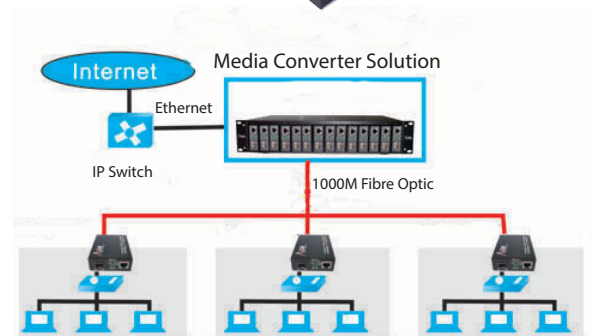
### FEATURES

- Supporting inter-conversion between 10/100/1000Base-TX and 1000Base-SX
- Supporting full-duplex and half-duplex and its auto-sensed
- Supporting automatic cross connection of twisted pair interfaces, facilitating system commissioning and installation
- Supporting the transmission of extra-long VLAN packets
- Supporting Quality of Service (QoS) and ensuring the transmission of VoIP packets;
- Supporting STP to form a redundant network



### APPLICATION

10/100/1000Mbps Gigabit optical Ethernet long-distance transmitting network

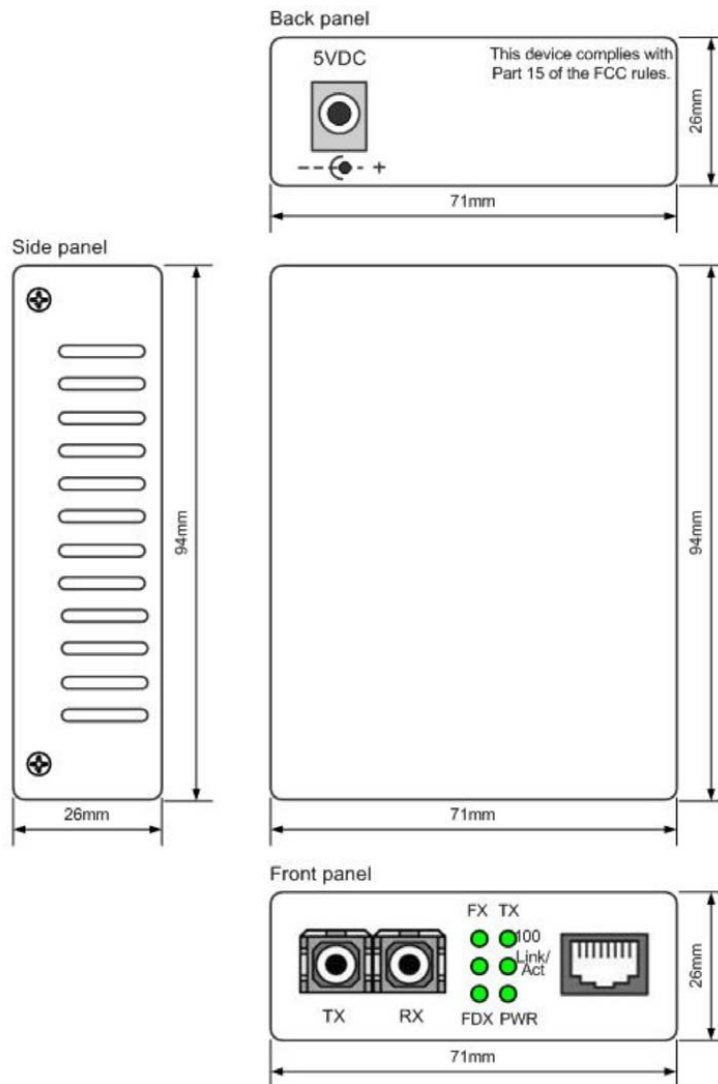


### Technical Indexes

PARAMETER	SPECIFICATIONS
Access Mode	10/100/1000 Mbps Gigabit Ethernet
Standard	IEEE802.3ab 1000Base-T IEEE802.3z 1000Base-SX/LX Gigabit Ethernet IEEE802.1qVLAN IEEE802.1p QoS IEEE802.1d Spanning Tree
Wavelength	850nm/1310nm/1550nm
Transmission Distance	Dual-fibre multi-mode: 220m (62.5/125µm)/550m (50/125µm) Dual-fibre single-mode: 25/40/60/80km Single-fibre single-mode: 25/40km Category-5 twisted pair: 100m
PortW	One RJ45 connector: connected to STP/UTP category 5 twisted pair One fibre port: Multi-mode SC (fibre size: 50,62.5/125µm) Single-Mode SC/FC (fibre size:9/125µm)
Conversion Means	Media Conversion
Delay	<10us
BER	<10 <sup>-9</sup>
MTBF	100,000 hours
LED	PWR (Power supply), FX LINK (Optical link action), TP LINK1000 (twisted pair link1000M), TP LINK100 (twisted pair link 100M), TP ACT (twisted pair packet forwarding)
Power	AC220 0.5A/DC-48 (built-in)
Power Consumption	5W
Operating Temperature	-10 - 55°C
Operating Humidity	5% - 90%
Maintaining Temperature	-40 - 70°C
Maintaining Humidity	5% - 90% non-condensing
Dimensions	71mm (W) * 94mm (D) * 26 mm (H) (external power supply)



### Mechanical Dimensions



### Order Information

MODEL	FX PORT	TX PORT	WORKING WAVE-LENGTH	Fibre MODEL	TX POWER (dBm)	RX POWER (dBm)	DISTANCE
AC1100M	SC	RJ-45	850nm	MM Dual Fibre	-17 - -12	= -20.0	220/550m
AC1100-20	SC	RJ-45	1310nm	SM Dual Fibre	-3 - -8	= -23.0	20km
AC1100-40	SC	RJ-45	1550nm	SM Dual Fibre	-3 - -0	= -25.0	40km
AC1100-60	SC	RJ-45	1550nm	SM Dual Fibre	=1	= -27.0	60km
AC1100-80	SC	RJ-45	1550nm	SM Dual Fibre	=1	= -27.0	80km
ACS1100-20	SC	RJ-45	1310nm	SM Single Fibre	-3 - -8	= -23.0	20km
ACS1100-40	SC	RJ-45	1310nm	SM Single Fibre	-3 - -0	= -25.0	40km